



# *Myway and Oakbank*

St Leonards Hill, Windsor, SL4 4AT

**HoopersHomes**

# *Myway and Oakbank*

St Leonards Hill, Windsor, SL4 4AT

Hoopers Homes have secured one of the premier sites on the prestigious St. Leonards Hill estate towards the summit and are bringing to the market two beautiful detached family homes set within larger than average desirable plots.

Circa 5000 square feet and built over 3 floors, the properties offer exceptionally well planned accommodation including spacious kitchen/family breakfast rooms with direct access to the gardens, home office/study, separate dining room and additional rooms on the top floor.

Ideally located approximately two miles outside the town, the development is a short drive from the M4 (Junction 6), has easy access to the M3 and also the larger commercial centres of Slough, Bracknell and Reading.

The town also boasts two mainline railway stations, a thriving town centre and is on the doorstep of many fine golf courses, Windsor Great Park and Guards Polo Club.

There are some excellent schools in the area for both state and private with a broad range of primary and secondary culminating with Eton just over the bridge.



Photo's depict previous Hoopers Homes showhome

# Specification

## Multi Room Sonos Audio, Electrics and Heating

Underfloor heating to ground and first floors  
MVHR heat recovery system  
Network cable patch system (CAT5)  
Ipad media launch port  
Rako LED lighting system  
Multi telephone point facility for broadband distribution

## Decorative Finishes

Entrance atrium chandelier  
Oak staircases with polished chrome finished stair bars  
Bespoke bedroom furniture fitted to all 5 bedrooms  
Polished chrome ironmongery  
Handmade curtains and blinds  
Engineered walnut flooring to dining room  
50oz wool twist fitted carpets to first, second floor and ground floor study and lounge

## Kitchen/Breakfast and Utility Room

Lucido Stone & Dark Oak Kitchen  
Silestone Quartz worktops  
Porcelain tiled floor  
Miele appliance range:  
Wine cooler | Induction hob | Fan ovens | Coffee machine  
Warming draws | Microwave | Freezer | Dishwasher  
Blanco Sink | American style fridge and freezer | Franke boiling tap

## Bathrooms and Cloakroom

Glass shower enclosures  
Duravit Sanitaryware and Vanity Units

## Security

Security alarm to all areas with facility for connection to police station  
Smoke/Heat detectors throughout  
Automated entrance gates with colour video entry system  
Electric garage doors  
Window locks

## Warranty

10 year BLP warranty

## Exterior Features

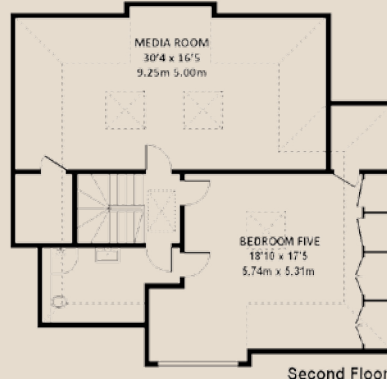
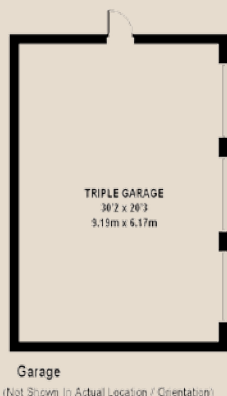
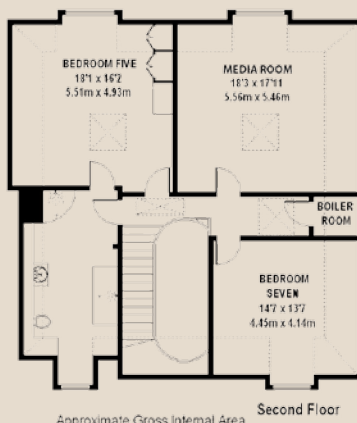
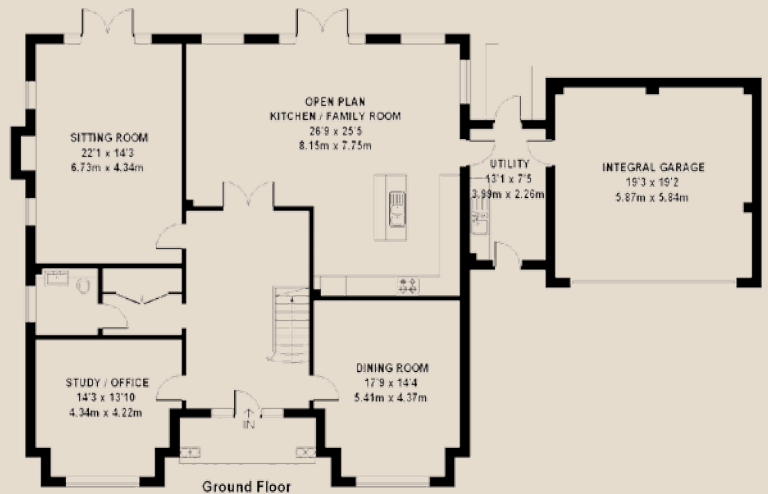
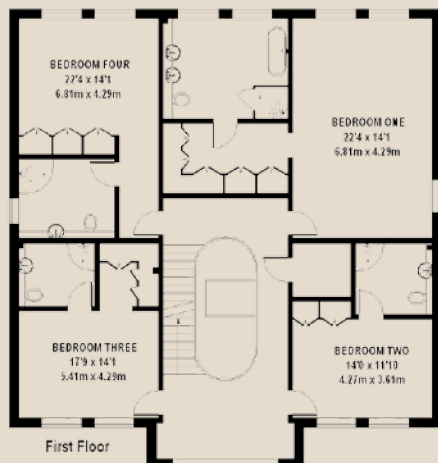
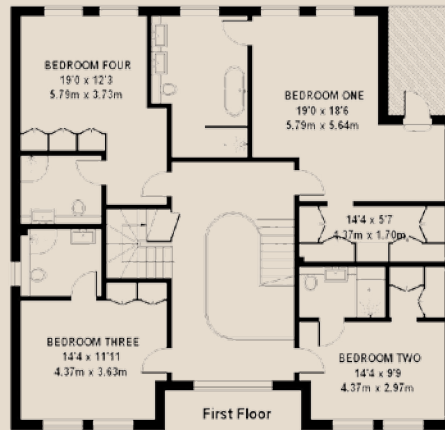
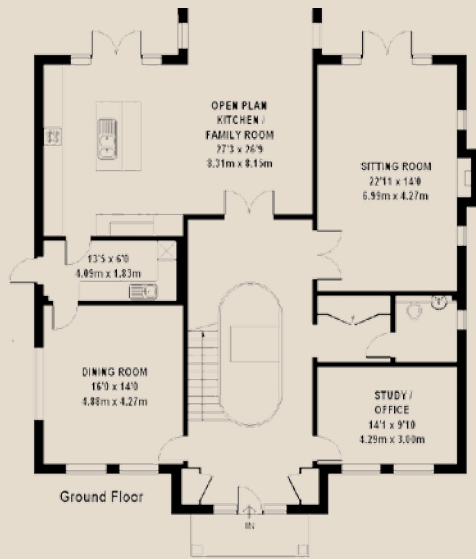
Garden laid to turf and shrub borders  
Indian sandstone patio areas  
Block paved drive and parking areas  
French patio doors



Photo's depict previous Hoopers Homes showhome

# Myway and Oakbank

St Leonards Hill, Windsor, SL4 4AT



Approximate Gross Internal Area  
Ground Floor = 1906 sq ft / 177.1 sq m  
First Floor = 1752 sq ft / 162.6 sq m  
Second Floor = 1228 sq ft / 114.1 sq m  
Garage = 612 sq ft / 56.8 sq m  
Total = 5498 sq ft / 510.8 sq m

Approximate Gross Internal Area  
(Including Integral Garage)  
4884 sq ft / 453.7 sq m

**New Homes**  
01932 950500

**Email**  
newhomes@astonmead.com

**Property Management** - 01932 950900  
**Mortgages** - 01932 950700  
**Survey & Relocations** - 01932 950800  
**Conveyancing** - 01932 950800  
**Land and New Homes** - 01932 950500  
**Business Development/Customer Services** - 01932 950600

